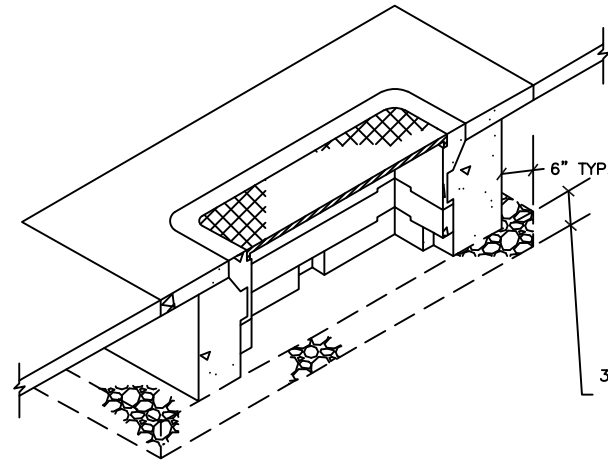


SEE SHEET NOTE 2 AND 7 FOR MORE INFORMATION

PLAN

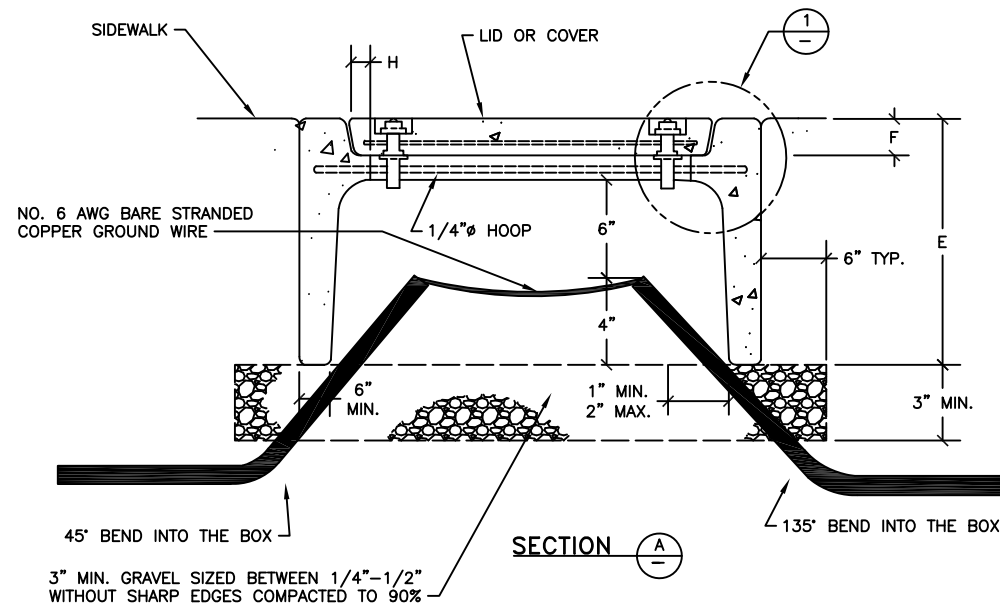


3" MIN. GRAVEL SIZED BETWEEN 1/4"-1/2" WITHOUT SHARP EDGES COMPACTED TO 90%

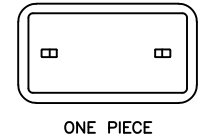
TYPE	DIMENSIONS (INCHES)								REMARKS	
	A	B	C	D	E	F	G	H		
								MIN.	MAX.	
N16	20 3/4	19 1/2	10 5/8	9 1/4	12	2	2 7/8	5/8	3/4	FURNISH WITH LID OR COVER, AS APPLICABLE. SEE SHEET NOTES.
N36	30 1/2	29	17 1/2	16 1/4	12	2	4 3/4	5/8	7/8	FURNISH WITH LID OR COVER, AS APPLICABLE. SEE SHEET NOTES.
B1017	20	18 1/4	13 3/8	11 3/8	12	2 1/2	3 7/8	5/8	7/8	FURNISH WITH LID OR COVER, AS APPLICABLE. SEE SHEET NOTES.

**SHEET NOTES:**

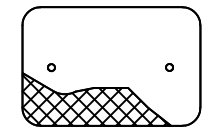
- ALL EXPOSED METALLIC PORTIONS OF THE PULL BOXES SHALL BE CONSTRUCTED WITH FERROUS MATERIALS AND SUCH MATERIALS SHALL BE HOT-DIP GALVANIZED AFTER FABRICATION.
- PULL BOXES, COVERS AND EXTENSIONS SHALL BE PRECAST REINFORCED CONCRETE. PULL BOXES SHALL HAVE ETCHED POLYETHYLENE FACE ANCHORED IN CONCRETE AND ULTRAVIOLET INHIBITOR.
- PULL BOXES PLACED IN ROADWAYS OR IN AREAS SUBJECT TO VEHICLE AND HEAVY MACHINERY TRAFFIC SHALL BE FURNISHED WITH STEEL CHECKER PLATE TRAFFIC COVERS. IN ADDITION, A 6-INCH WIDE BY 12-INCH HIGH CONCRETE RETAINING WALL SHALL BE CONSTRUCTED ALL AROUND EACH PULL BOX INSTALLED IN SUCH AREAS.
- A 12-INCH WIDE BY 3 1/2-INCH DEEP (MINIMUM) CONCRETE SLAB SHALL BE CONSTRUCTED ALL AROUND EACH PULL BOX (INCLUDING BOXES PROVIDED WITH THE 6-INCH THICK RETAINING WALL SET FORTH IN NOTE 3 ABOVE) INSTALLED IN UNPAVED OR ASPHALT CONCRETE PAVED AREAS. AREAS WITH PAVERS, STREETLIGHT BOXES MUST BE INSTALLED IN THE CENTER OF A 3-FOOT X 3-FOOT X 3 1/2 INCH DEEP (MINIMUM) CONCRETE SLAB
- LIDS AND COVERS SHALL BE PROVIDED WITH THE FOLLOWING LEGENDS, AS APPLICABLE:  
 FIRST LINE: SFPUC  
 SECOND LINE: STREET LIGHTING  
  
 LETTERS SHALL BE 1-INCH AND MADE WITH 1/4-INCH WIDE STROKES. LETTERS INSCRIBED IN CONCRETE LIDS OR COVERS SHALL BE MADE WITH 1/8-INCH (MINIMUM) DEEP IMPRINTS. LEGENDS IN STEEL COVERS SHALL BE MADE WITH WELD BEAD LETTERS.
- PROVIDE BONDING JUMPER (3' LONG, MINIMUM) FOR STEEL COVERS TO BE BONDED TO CONDUIT.
- CONDUIT ENTERING THE PULL BOX MUST HAVE 2-3 INCH CLEARANCE FROM THE SIDES OF THE INTERIOR WALLS.



**TYPICAL INSTALLATION OF PULL BOX WITH 6" CONCRETE RETAINING WALL (SEE NOTE 4) AND WITH STEEL TRAFFIC COVER**



ONE PIECE  
**LIDS**  
(CONCRETE, REINFORCED)



ONE PIECE  
**COVERS**  
(STEEL, HOT-DIP GALVANIZED AFTER FABRICATION)



DETAIL 1

**PRECAST PULL BOX, COVERS AND LIDS**

THIS STANDARD PLAN WAS DEVELOPED FOR USE ON PUBLIC UTILITIES COMMISSION PROJECTS IN THE CITY AND COUNTY OF SAN FRANCISCO, AND SHALL NOT BE USED WITHOUT CONSULTING A REGISTERED PROFESSIONAL ENGINEER. SFPUC/POWER RESERVES THE RIGHT TO MAKE REVISIONS TO THIS STANDARD PLAN AT ANYTIME.

**STANDARD PLANS  
ELECTRICAL**

**PULL BOX  
LIDS AND DETAILS**

TABLE OF REVISIONS  
THIS DRAWING WAS LAST TOUCHED ON 20230629 - 8:14AM

REV	DATE	DESCRIPTION	BY	APP

SFPUC - POWER ENTERPRISE ENGINEERING: STREETLIGHTS

CITY AND COUNTY OF SAN FRANCISCO

DATE: 7/11/2023  
 DESIGNED: CCSF  
 DRAWN: DG  
 CHECKED: RH  
 PROJ ENGR:  
 SCALE: NOT TO SCALE

SHEET NAME  
**PE2656.01**

REVISION NUMBER  
**1.0**

CONSULTANTS: OTHER AGENCIES