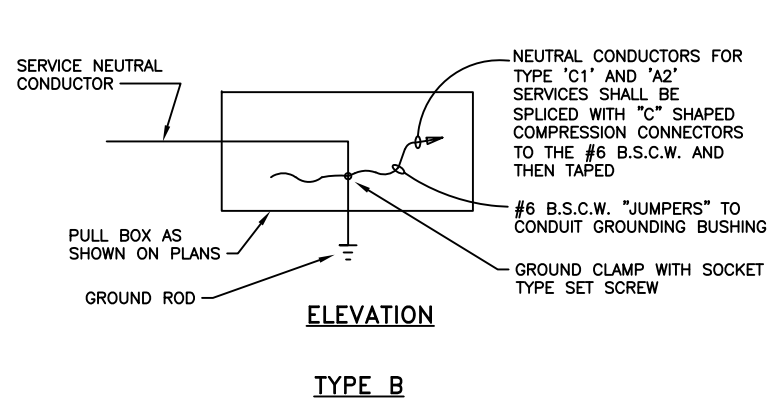
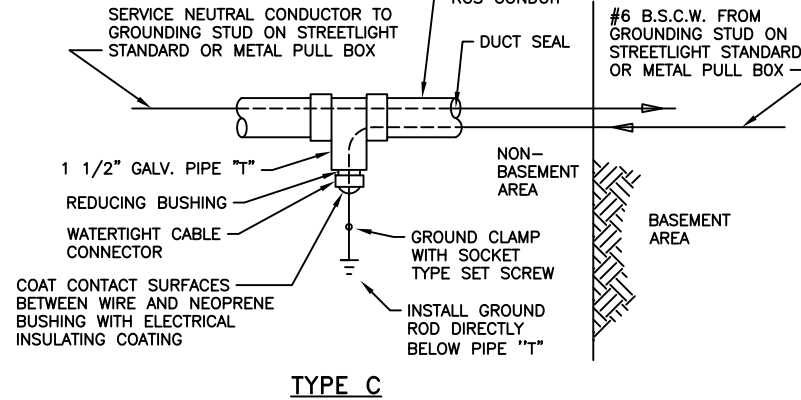


TYPE A



TYPE B

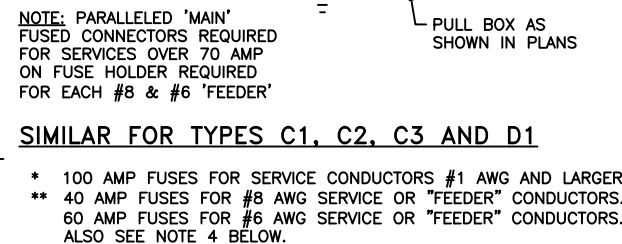
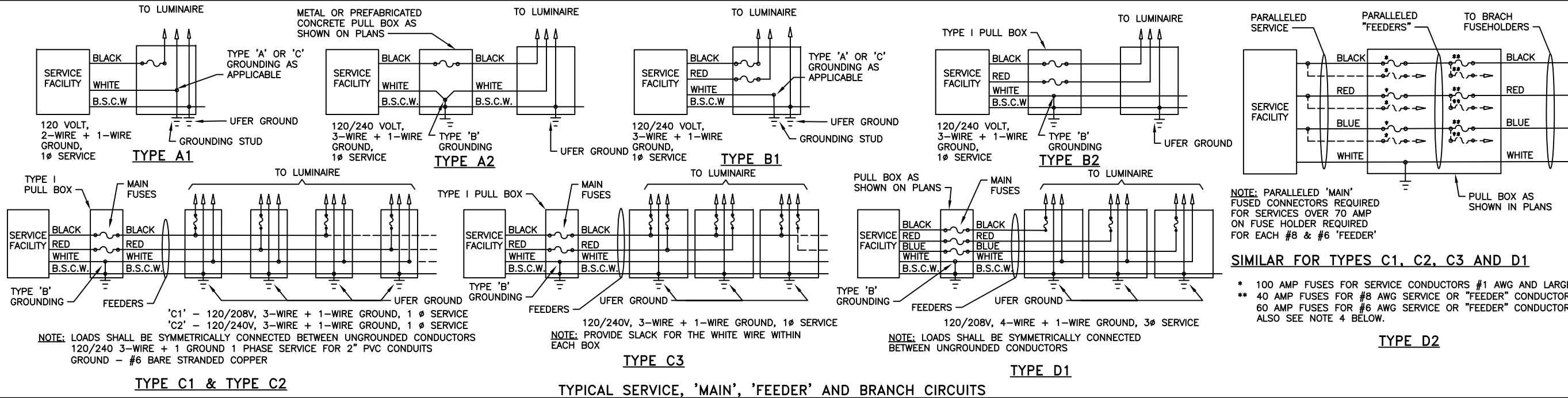


TYPE C

SERVICE GROUNDING NOTES:

1. THE SERVICE NEUTRAL CONDUCTOR SHALL BE CONTINUOUS FROM THE SERVICE CONNECTION TO THE GROUND STUD ON THE STANDARD OR GROUND ROD AS SHOWN IN THE TYPES OF SERVICE GROUND.
2. ALL STANDARDS SHALL HAVE GROUNDING STUDS OR LUGS FOR CONNECTION OF GROUNDING CONDUCTORS.
3. THE GROUND ROD SHALL BE A 5/8" x 10 FT. LONG COPPERCLAD STEEL GROUND ROD. THE GROUND ROD SHALL BE FURNISHED WITH ADDITIONAL APPROVED WIRE CONNECTORS WHERE REQUIRED.
4. B.S.C.W. DENOTES BARE STRANDED COPPER WIRE.

SERVICE GROUNDING DETAIL



SIMILAR FOR TYPES C1, C2, C3 AND D1

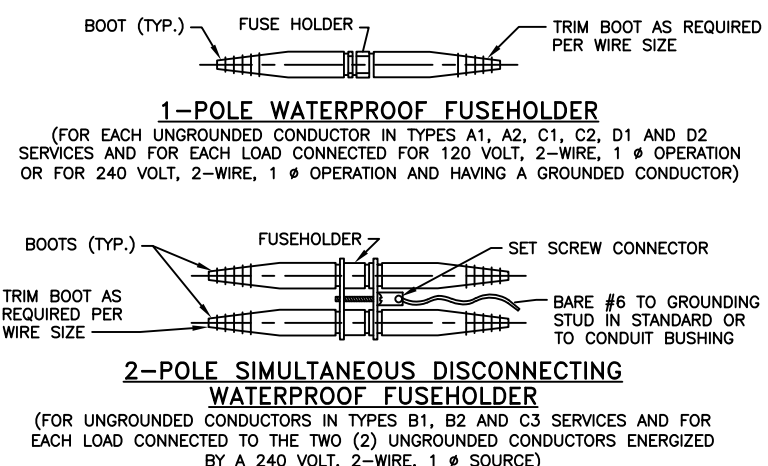
- * 100 AMP FUSES FOR SERVICE CONDUCTORS #1 AWG AND LARGER.
- ** 40 AMP FUSES FOR #8 AWG SERVICE OR "FEEDER" CONDUCTORS.
- 60 AMP FUSES FOR #6 AWG SERVICE OR "FEEDER" CONDUCTORS.
- ALSO SEE NOTE 4 BELOW.

CIRCUIT PROTECTION REQUIREMENTS

(UNLESS OTHERWISE NOTED)

TYPE OF SERVICE	MAIN FUSE			BRANCH CIRCUIT										
	A1,A2 B1,B2	C1,C2,C3 D1,D2	C1,C2,C3 D1,D2	WATTAGE OF LUMINAIRE	0W-200W		200W<W< 250W		250W<W< 400W		400W<W< 700W		700W<W< 1000W	
SERVICE CONDUIT	1 1/2"	1 1/2"	1 1/2"	ENERGIZING VOLTAGE OF LUMINAIRE	120	240	120	240	120	240	120	240	120	240
EACH "FEEDER" CONDUCTOR	#8	#8	#6 NOTE 5	CURRENT RATING OF FUSE (ALL FUSES SHALL BE RATED 600 VOLTS, 10,000 A.I.C.)	10	10	15	10	20	10	30	15	50	25
TOTAL LOAD CURRENT EACH "FEEDER"	-	15A NOTE 4	15A-30A NOTE 4											
MAIN FUSE (CURRENT RATING)	NONE REQ'D	40	60											

NOTE: USE 2" PVC SCHEDULE 80 FROM BOX TO BOX
USE 1.5" RGS CONDUIT FROM BOX TO STREETLIGHT



"MAIN", "FEEDER" AND BRANCH FUSEHOLDER NOTES:

1. PROVIDE FUSEHOLDERS FOR FUSES AS SHOWN IN THE APPLICABLE DETAILS AND IN ACCORDANCE WITH THE SCHEDULE AS SHOWN ON THIS PLAN.
2. CONNECTING SLEEVES SHALL BE OF THE APPROPRIATE SIZE FOR THE CONDUCTORS SHOWN ON THE PLANS.
3. FUSEHOLDERS SHALL BE INSTALLED AS FOLLOWS (UNLESS OTHERWISE NOTED OR SPECIFIED):
 - A. "MAINS" AND INDIVIDUALLY SERVED STREETLIGHTS LOCATED LESS THAN 35 FT. FROM SERVICE LOCATION: IN PULL BOX NEAREST SERVICE BOX.
 - B. BRANCHES AND INDIVIDUALLY SERVED STREETLIGHTS LOCATED MORE THAN 35 FT. FROM SERVICE LOCATION: IN PULL BOX NEAREST STREETLIGHT STANDARD.
4. MAIN FUSES SHALL NOT BE LESS THAN TWO TIMES LINE CURRENT, NOR LESS THAN TWO TIMES THE LARGEST BRANCH FUSE SIZE.
5. FUSE HOLDERS FOR SERVICE FUSES SHALL BE FURNISHED WITH "BREAKAWAY" FEATURE. A 3-POLE SIMULTANEOUS DISCONNECTING FUSE HOLDER SHALL BE FURNISHED WITH "MAIN" FUSES FOR 3Ø CIRCUITS. 2#8 CONDUCTOR "TAPS" REQUIRED FOR EACH LUMINAIRE.

THIS STANDARD PLAN WAS DEVELOPED FOR USE ON PUBLIC UTILITIES COMMISSION PROJECTS IN THE CITY AND COUNTY OF SAN FRANCISCO, AND SHALL NOT BE USED WITHOUT CONSULTING A REGISTERED PROFESSIONAL ENGINEER. SFPUC/POWER RESERVES THE RIGHT TO MAKE REVISIONS TO THIS STANDARD PLAN AT ANYTIME.

**STANDARD PLANS
ELECTRICAL
STREETLIGHT SERVICE
AND CIRCUIT REQUIREMENTS**

TABLE OF REVISIONS
THIS DRAWING WAS LAST TOUCHED ON 2023.06.30 - 8:58AM

REV	DATE	DESCRIPTION	BY	APP

SFPUC - POWER ENTERPRISE ENGINEERING: STREETLIGHTS
CITY AND COUNTY OF SAN FRANCISCO

DATE: 7/11/2023
DESIGNED: CCSF
DRAWN: DG
CHECKED: RH
PROJ ENGR:
SCALE: NOT TO SCALE

SHEET NAME
PE2656.03.1
REVISION NUMBER