

PG&E NEAREST POINT OF DISTRIBUTION. TYPICALLY A CCSF OWNED INTERRUPTER IS NOT REQUIRED

PG&E METER

CCSF PRIMARY SWITCHGEAR

CCSF PRIMARY BREAKER

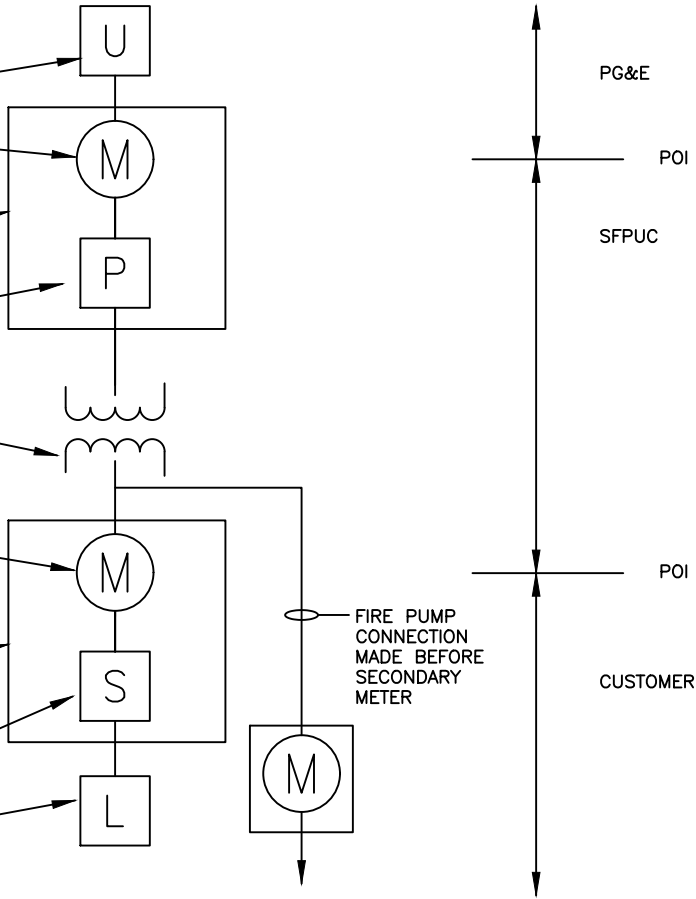
CCSF TRANSFORMER

SFPUC SECONDARY METER

CUSTOMER SECONDARY SWITCHGEAR

CUSTOMER SECONDARY BREAKER

CUSTOMER LOAD



ARRANGEMENT INFO

PRIMARY SERVICE SHALL HAVE ONE METER AT THE POINT OF INTERCONNECTION

- 1) PG&E WILL OWN THE ELECTRICAL SYSTEM UP TO THE PRIMARY METER (IN MOST CASES).
 - A) EXCEPTION IS IF THERE IS A PRIVATE SERVICE CABLE. IN THE EVENT OF A PRIVATE CABLE, AN INTERRUPTER WILL BE INSTALLED AND SFPUC WILL OWN THE INTERRUPTER AND CABLE FROM INTERRUPTER TO THE CUSTOMER PROTECTIVE DEVICE
- 2) CUSTOMER IS RESPONSIBLE FOR FURNISHING AND INSTALLING SUBSTRUCTURES
- 3) SUBSTRUCTURES IN RIGHT-OF-WAY IS DEEDED TO PG&E
- 4) SUBSTRUCTURES ON CUSTOMER PROPERTY REMAINS RESPONSIBILITY OF THE CUSTOMER

LEGEND AND ABBREVIATIONS

- UTILITY
- TRANSFORMER
- METER
- PRIMARY PROTECTIVE DEVICE
- SECONDARY PROTECTIVE DEVICE
- LOAD
- POI POINT OF INTERCONNECTION

GENERAL NOTES

PRIMARY SERVICE. ALL LOAD SHALL BE METERED. FINAL DESIGN SHALL BE APPROVED BY SFPUC ENGINEER.

- 1) CUSTOMER IS RESPONSIBLE FOR FURNISHING AND INSTALLING ALL CCSF SUBSTRUCTURES (SUCH AS VAULT, CONDUIT, TRANSFORMER PADS, ETC)
- 2) CUSTOMER IS RESPONSIBLE FOR FURNISHING AND INSTALLING THE PRIMARY SWITCHGEAR (AND PROTECTIVE DEVICE)
- 3) NO CUSTOMER SHALL BE UNMETERED.
- 4) 2" CONDUIT AND ENCLOSURE ARE REQUIRED FOR SFPUC SMART METER. ENCLOSURE SHALL BE MOUNTED 8' TO 10' ABOVE GRADE AT EXTERIOR WALL.
- 5) 2" CONDUIT TO TELECOM ROOM.

SFPUC

- 1) SFPUC IS RESPONSIBLE FOR FURNISHING AND INSTALLING THE TRANSFORMER (IN CUSTOMER FURNISHED PAD OR VAULT)
- 2) SFPUC IS RESPONSIBLE FOR FURNISHING CCSF PROTECTIVE DEVICE UPSTREAM OF THE PRIMARY SWITCHGEAR (IF REQUIRED).

SFPUC SERVICES
PRIMARY SERVICE

ARRANGEMENT

REV	DATE	DESCRIPTION	BY	APP

SFPUC - POWER ENTERPRISE ENGINEERING CONSULTANTS OVER ANCHORS
 CITY AND COUNTY OF SAN FRANCISCO

DATE:	4/16/2021
DESIGNED:	MH
DRAWN:	MH
CHECKED:	RA
PROJ ENGR:	RA
SCALE:	AS SHOWN
1" = 0' 0" (SEE NOTE ON THIS SHEET) 1" = 0' 0" (SEE NOTE ON THIS SHEET)	

SHEET

E-1

JOB NO.