

Identifying Plumbing Fixtures

In order to qualify for free toilet replacement through PREP, your existing toilets must use at least 3.5 gallons per flush (gpf). Eligible toilets are generally installed before 1994. Bathrooms must accommodate installation of new high-efficiency toilets without any plumbing alterations or repairs. Properties with abnormal site conditions (e.g. rotted flooring, atypical plumbing conditions, etc.) will not be eligible for the PREP Program until conditions are improved by owners.

As of July 1, 2020, the SFPUC's Plumbing Fixture Replacement Program requires new applicants must submit a minimum of two (2) photographs of eligible fixtures with the following criteria:

- One photo including a piece of paper with the date, address (including unit number for multi-unit residences) and water account with the toilet, including toilet manufacturer stamp with make/model and gallon-per-flush rating
- One photo of the bathroom the toilet is located, capturing the surrounding flooring area

To assist you in first identifying qualifying fixture types and their efficiency rating, please refer to the information provided below.

TOILETS

The two primary types of toilets are tank-style toilets, such as the ones you might find in your bathroom at home, and flushometer-style toilets which can be found in multi-family properties.

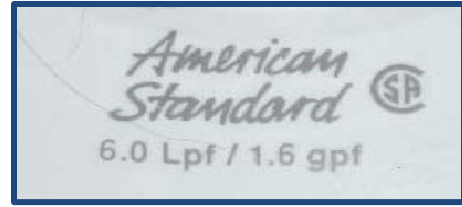


Tank-Style Toilet



Flushometer-Style Toilet

Once you have determined the toilet style, you can begin to determine the flush volume. The easiest way to determine the gallons per flush (gpf) is to check for a stamp near the back of the toilet bowl.



If you are unable to find a flush volume stamp, try to locate the year the toilet was manufactured (for tank-style toilets only). Typically, the year is stamped or impressed on the inside of the porcelain tank. The approximate manufacture dates, flush volumes, and efficiency ratings are below:

Year	Gallons Per Flush	Efficiency Rating	Replacement Eligible via PREP?
Pre-1982	5 - 7	Inefficient	Yes
1982-1994	3.5	Inefficient	Yes
1994-2013	1.6	Ultra-Low Flow Toilet (ULFT)	No
2000-present	1.28	High-Efficiency Toilets (HET)	No

Eligibility indicators on Flushometer-Style Toilet Valves: On the top of the valve if it has an engraved “LC” (low consumption), “HE” (high efficiency) or “HET” (high efficiency toilet), it is already low flow and is not eligible. If there is no “LC”, “HE”, or “HET” then the valve is not low flow and is eligible for the program.

Examples of Eligible (left) and Ineligible (right) Valves



NEED MORE HELP?

For additional assistance identifying plumbing fixtures or questions regarding PREP, please contact the SFPUC Water Conservation Section at waterconservation@sfgov.org. The SFPUC provides free Water-Wise Phone Consultations that can help facilities identify leaks, inefficient plumbing fixtures, and provide information on rebates and free devices. For more information on indoor and outdoor water conservation programs and services, visit www.sfgov.org/conservation.