



SEWER SYSTEM IMPROVEMENT PROGRAM | Grey. Green. Clean.

Chinatown Spofford Living Alley

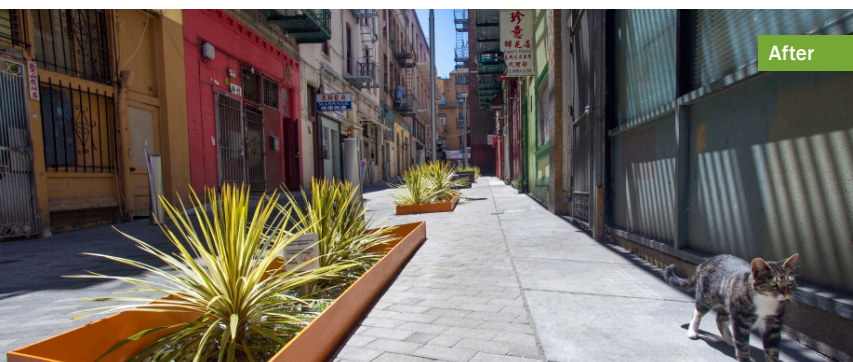
Improving Our Sewer System and Benefiting the Community

The San Francisco Public Utilities Commission (SFPUC), and San Francisco Department of Public Works (SFPDW) completed the Chinatown Spofford Living Alley in summer 2018. The project is one of eight green infrastructure Early Implementation Projects (EIPs) designed to manage stormwater in a one-block alleyway San Francisco's historic Chinatown district.

The project features flow-through planters that will capture, treat and absorb approximately 32,000 gallons of stormwater a year while greening the urban environment. Other improvements on Spofford include decorative concrete pavers; pedestrian-scale lighting and raised crosswalks at both ends to slow vehicles entering the alley; bollards to protect pedestrians from traffic; and bench seating for passersby to rest and take in the sights.



Before



After

Project Statistics

Watershed: North Shore

Stormwater Managed: 32,000 gallons each year

Drainage Area: 0.095 acres of impervious surface

Green Features: 203ft² of flow-through planters

Associated Community Benefits

- Revitalize historic Chinatown Alley
- Enhance pedestrian space
- Create more green space
- Provide community recreation space
- Beautify the neighborhood
- Enrich Chinatown cultural traditions

About the Sewer System Improvement Program

The Chinatown Spofford Living Alley is a part of the Sewer System Improvement Program (SSIP), a multi-billion-dollar citywide investment required to upgrade our aging sewer system

The SSIP is the result of an eight-year community planning process and will ensure a reliable, sustainable and seismically safe sewer system now and in the future.

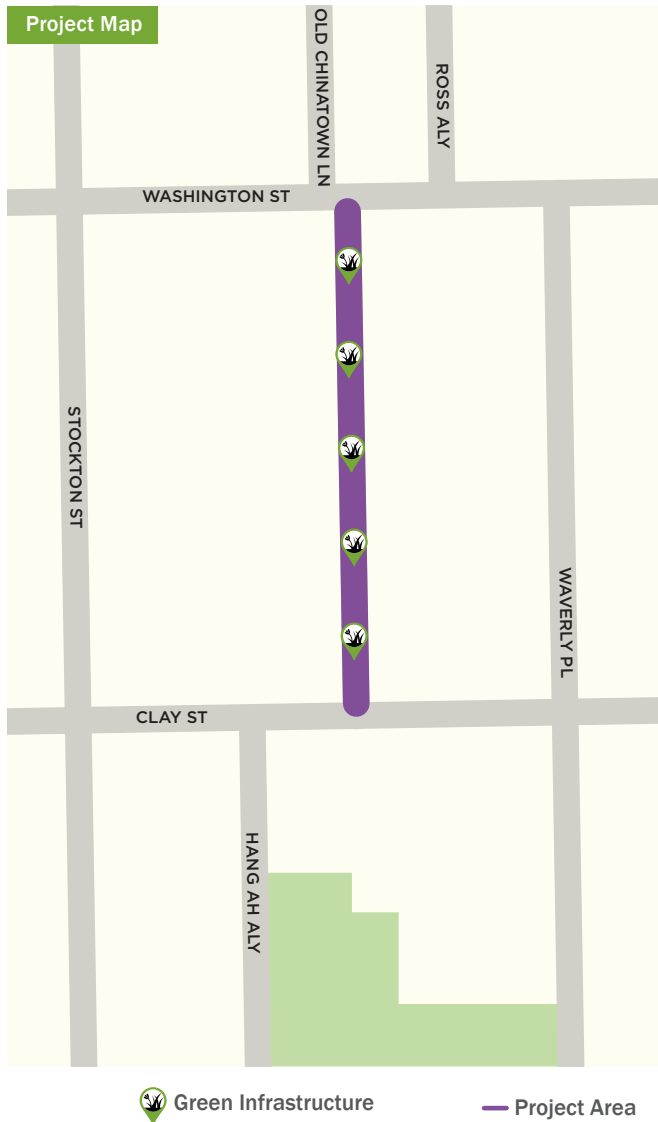
For more information, visit

sfwater.org/chinatowngreenalley

Green infrastructure can help manage and treat stormwater onsite before it enters the sewer system and also provide livable city benefits like neighborhood beautification and traffic calming.



FLOW-THROUGH PLANTER: Flow-through planters are structural landscaped planters that collect stormwater runoff from adjacent impervious surfaces (streets, sidewalks, parking lots). These planters filter out pollutants and water percolates through the vegetation, growing medium, and gravel and then is slowly released to the sewer system.



Green Infrastructure (GI) in San Francisco

- Green Infrastructure captures and cleans stormwater with drought tolerant plants
- Project benefits include environmental protection, flood risk mitigation and better use of rainwater to adapt to climate change
- One of 8 demonstration projects in each of San Francisco's urban watersheds to evaluate how well GI can manage stormwater

Project Contact Information:

- SFPUC General Hotline: **(415) 554-3289**
- Email us at ssip@sfgwater.org
- Project website: sfgwater.org/chinatowngreenalley

Para una copia de este material en español o para más información en español, por favor póngase en contacto con nosotros en (415) 554-3289 o info@sfgwater.org.

拿取這些資料的中文副本,或詢問其他資料,請致電 (415) 554-3289 或電郵 info@sfgwater.org.

In partnership with:



f **t** **#sfewer**
sfgwater.org/ssip
ssip@sfgwater.org