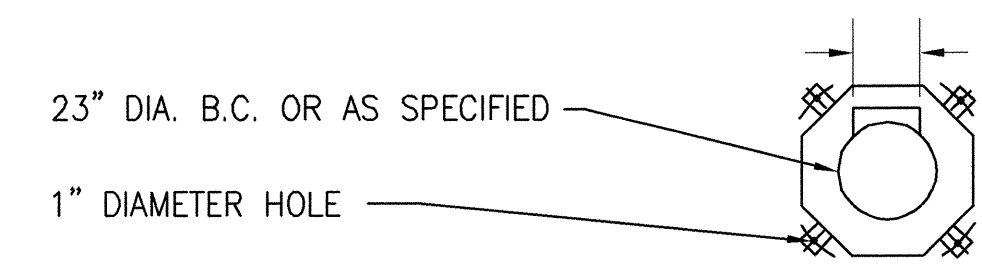
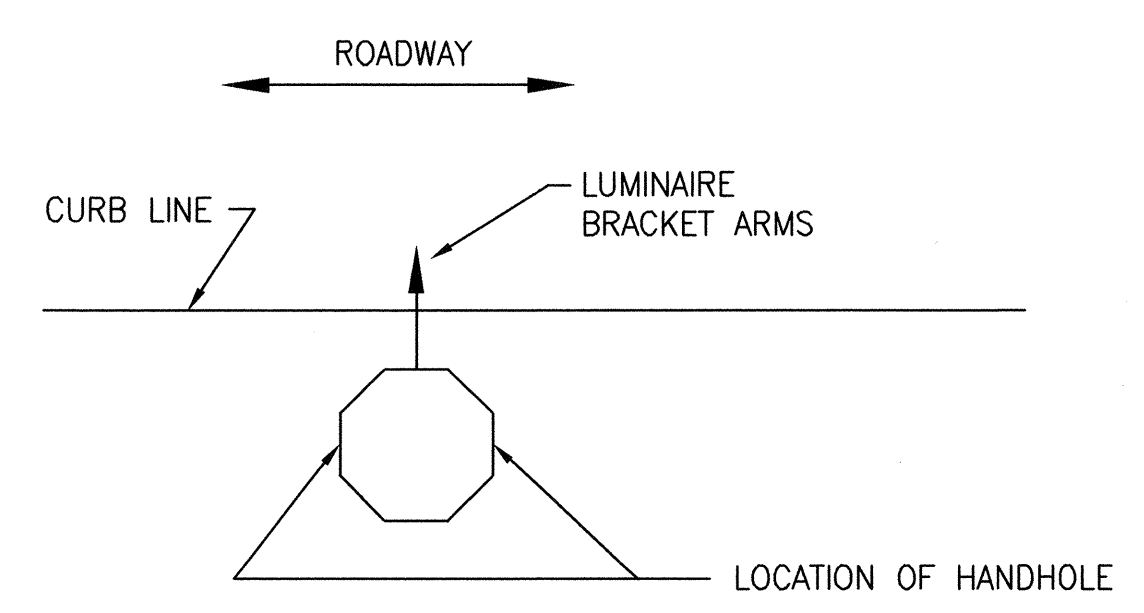


INSTALL DUPLICATE BRACKET ARM WHERE "TWIN-MEMBER" STREET LIGHTS ARE SPECIFIED. ARMS SHALL BE INSTALLED IN A "BACK-TO-BACK" ARRANGEMENT 180° TO EACH OTHER

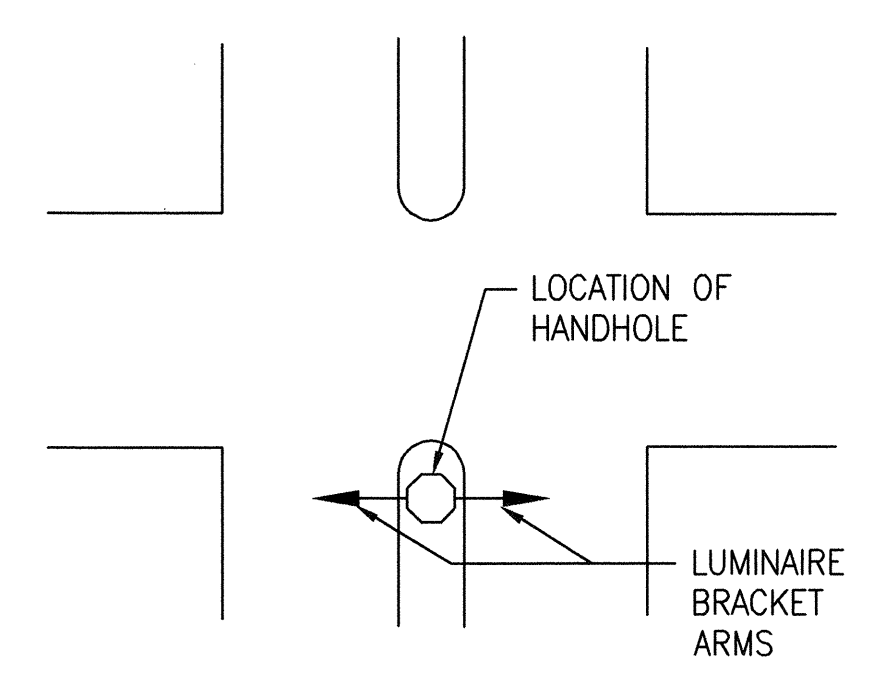
THREADED INSERT WHEN REQUIRED. SEE DETAIL 1



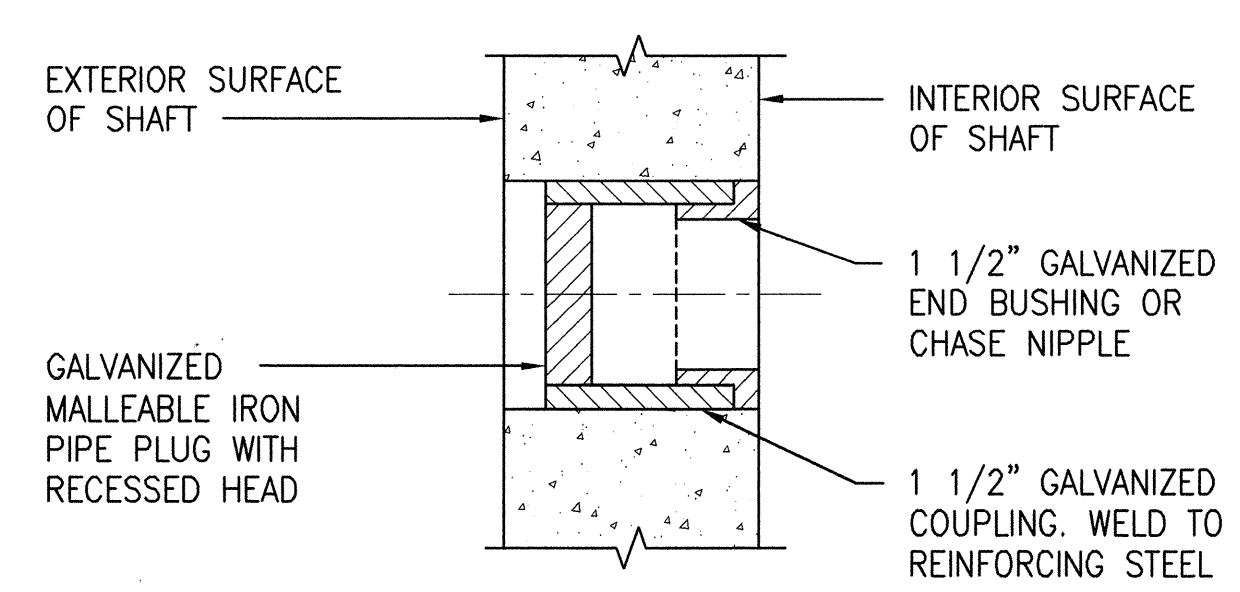
**ELEVATION**



TYPICAL LOCATION OF HANDHOLE ON SINGLE-MEMBER STREET LIGHT STANDARDS



TYPICAL LOCATION OF HANDHOLE ON TWIN-MEMBER STREET LIGHT STANDARDS

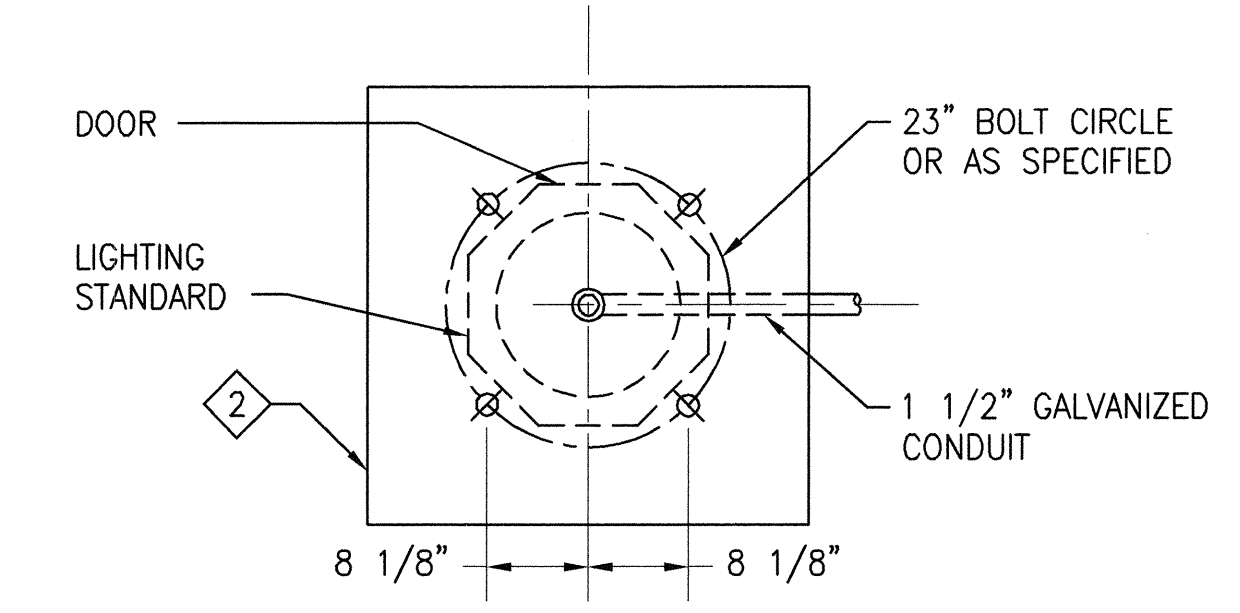


**DETAIL 1**

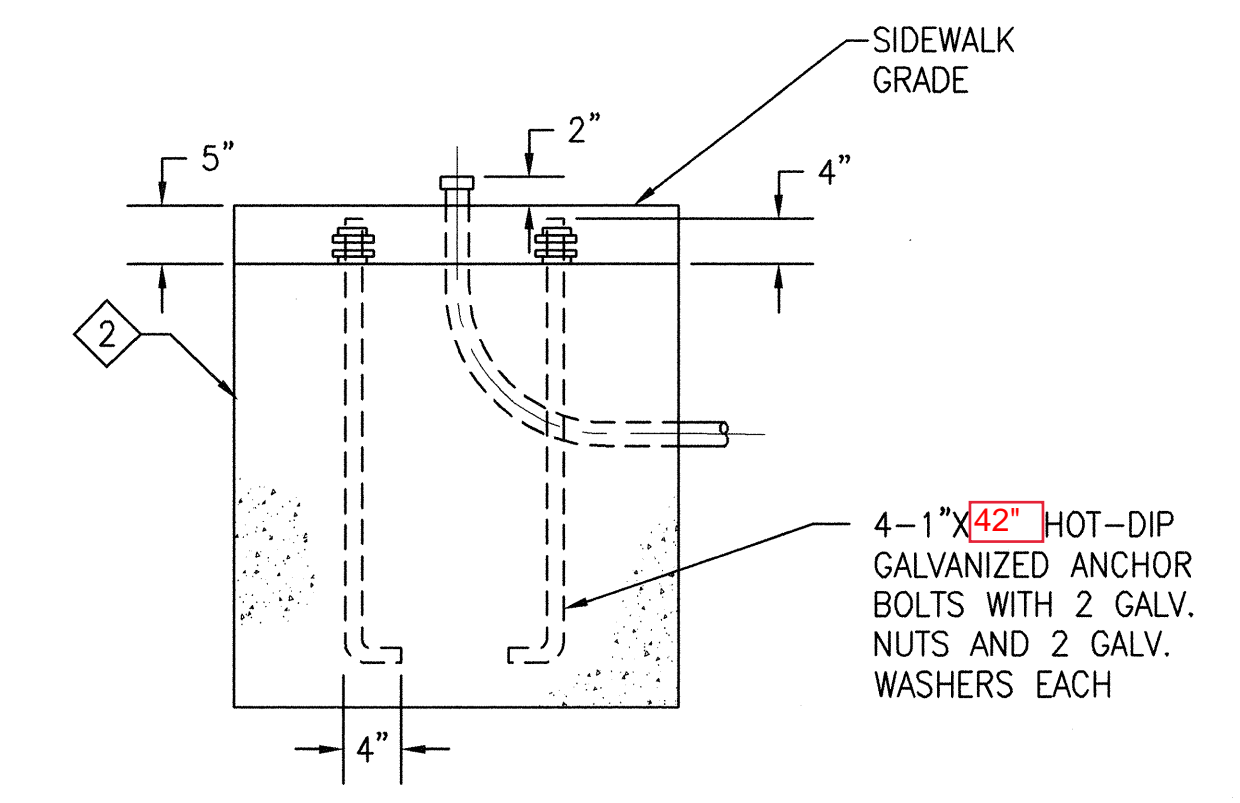
THREADED INSERT  
(LOCATION OF INSERT AS NOTED ON PLANS)

**DETAIL NOTES:**

- 1 8 1/2" X 9 1/2" GALVANIZED OR SHEET ALUMINUM DOOR TO FIT OPENING ACCURATELY, FLUSH WITH EXTERIOR SURFACE. DIMENSIONS SHOWN INDICATE NET DOOR OPENING. FASTEN DOOR WITH BRONZE INSERTS AND 1/4" STAINLESS STEEL SCREWS.
- 2 **SPECIAL FOUNDATION IS NEEDED FOR THIS POLE. SUBMIT FOUNDATION CALCULATIONS AND DESIGN WITH ATTACHMENTS OUTLINED IN THE STREETLIGHT GUIDELINES**



**PLAN**



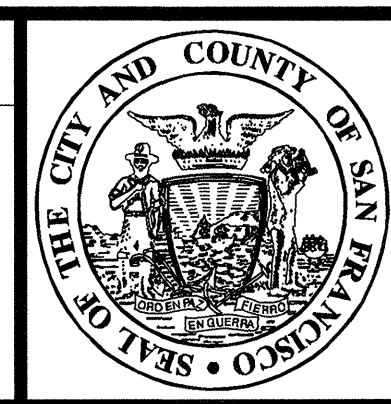
**ELEVATION**

**FOUNDATION DETAIL**

This Standard Plan was developed for use on public works projects in the City and County of San Francisco, and shall not be used without consulting a Registered Professional Engineer. The Department of Public Works reserves the right to make revisions to this Standard Plan at any time.

NO.	DATE	DESCRIPTION	BY	APP.
TABLE OF REVISIONS CHECK WITH TRACING TO SEE IF YOU HAVE LATEST REVISION				

REFERENCE INFORMATION & FILE NO. OF SURVEYS



**BUREAU OF ENGINEERING**  
DEPARTMENT OF PUBLIC WORKS  
CITY AND COUNTY OF SAN FRANCISCO

REVIEWED:	DATE:	PLANS APPROVAL DATE:	APRIL 30, 2007
BC	01/2007	<i>Damarat Juehr</i>	4/27/07
DRAWN:	DATE:		
RT	01/2007	<i>M...</i>	4/30/07
CHECKED:	DATE:		
TA	01/2007	<i>Jan Chie</i>	

<b>STANDARD PLAN</b>		OLD FILE NO.
<b>ELECTRICAL</b>		A-36,794
<b>TYPE D STREET LIGHT WITH OCTAGONAL CONCRETE STANDARD INSTALLATION DETAILS</b>		FILE NO. 87,211
		REV. NO.

Drawing Path: V:\0966J Standard Plans & Specs Update\2\_Plans\FINAL\ELE-11.dwg, Login: carantos  
 Plot Time: Fri, 27 Apr 2007 5:41pm  
 Measurement Units are: English  
 Model Units: Feet  
 Dimension Scale: 1