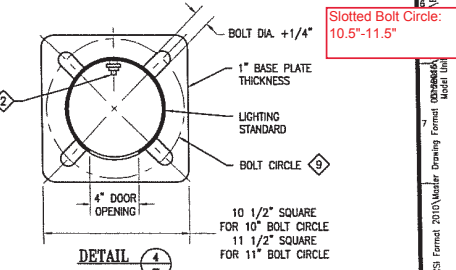


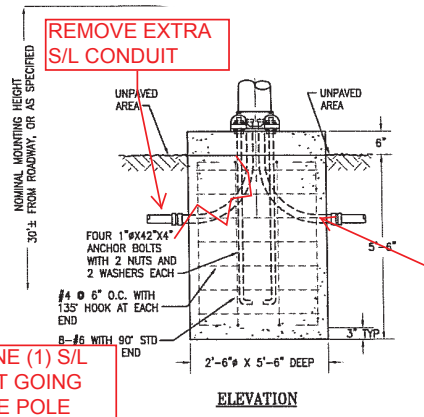
SHEET NOTES:

- DASH LINES DENOTE THAT TWIN-MEMBER STANDARD SHALL BE OF IDENTICAL CONSTRUCTION EXCEPT FOR ADDITIONAL MAST ARM WITH FITTINGS AND LUMINAIRE. THE TWIN MAST ARMS SHALL BE MOUNTED 180° "BACK-TO-BACK" TO EACH OTHER.
- GROUND STUD (WELDED TO INTERIOR SURFACE OF SHAFT OPPOSITE DOOR OPENING). STUD SHALL BE 1/4"x20 (CONTINUOUSLY THREADED) X 3/4" LONG AND SHALL BE FURNISHED WITH A TYPE 316 STAINLESS STEEL NUT AND A STAINLESS STEEL SHAKENUT WASHER.
- EACH ANCHOR BOLT - THREADED TOP 8".
- THE STANDARD, HANDHOLE COVER, MAST ARM, AND ANCHOR BOLTS WITH NUTS AND WASHERS, SHALL BE HOT-DIP GALVANIZED AFTER FABRICATION.
- THE HANDHOLE COVER OR DOOR SHALL HAVE THE SAME RADIUS OF CURVATURE AS THE SHAFT AND WHEN INSTALLED, SHALL FORM A SYMMETRICAL APPEARANCE WITH THE SHAFT.
- THE TAPERING ELLIPTICAL SECTION SHALL NOT BE MORE THAN TWO-THIRDS THE LENGTH OF THE MAST ARM AND SHALL TAPER TO THE EXTERNAL DIAMETER OF 2" PIPE.
- ALL EXPOSED WELDS SHALL BE GRIND SMOOTH AND SHALL CONFORM TO CONTOURS OF ADJACENT SURFACES. ALL WELDS SHALL HAVE A FINISHED DEPTH OF 3/8".
- DOOR OR HANDHOLE COVER SHALL BE SECURELY RETAINED IN PLACE WITH TWO 1/4"x20 STAINLESS STEEL SCREWS.
- FOR SHAFTS OF 25 FOOT OR LESS IN LENGTH, THE BOLT CIRCLE SHALL BE 10", UNLESS OTHERWISE NOTED. FOR SHAFTS MORE THAN 25 FOOT IN LENGTH, THE BOLT CIRCLE DIAMETER SHALL BE 11".
- THE THREADS WATER-PROOF WITH AN APPROVED INDUSTRIAL TYPE OF GRAPHITE.
- THE DOOR OR HANDHOLE COVER SHALL BE MOUNTED TO THE COVER WITH AN APPROVED INDUSTRIAL TYPE OF GRAPHITE. THE NON-CEMENTED SURFACE IMPREGNATED RUBBER LUBRICANT.
- HOT-DIP GALVANIZED SHALL BE RETAINED BY NOT EXTEND MORE THAN 1" ABOVE POLE.
- PROVIDE NEOPRENE GASKET FOR BRACKET PLATE TO INSURE WATER-TIGHT SEAL.
- TWO-BOLT SIMPLEX-MAST-ARM-FITTING-INSTALL NEAR TOP OF SHAFT AND SECURE WITH TWO 1/4"x20 STAINLESS STEEL SCREWS.
- FREE OPENING FACE OF DOOR SHALL BE MOUNTED FLUSH WITH THE CIRCULAR SURFACE OF POLE. DOOR SHALL BE FURNISHED WITH NEOPRENE GASKET.



PLAN OF STANDARD ANCHOR BASE

Plan of Foundation for streetlight

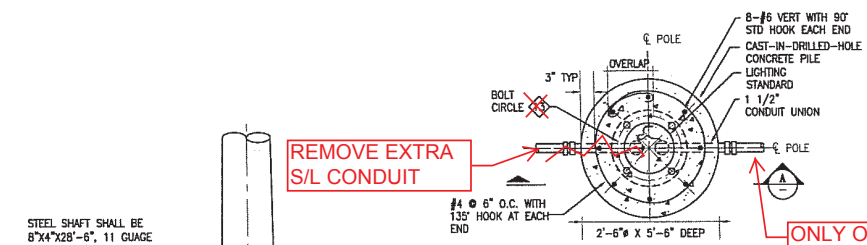


ELEVATION

REMOVE EXTRA S/L CONDUIT

ONLY ONE (1) S/L CONDUIT GOING INTO THE POLE COMING FROM S/L PULLBOX

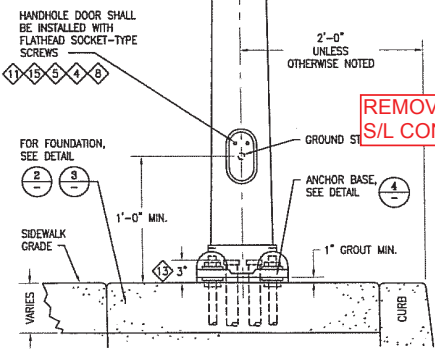
NORMAL MOUNTING HEIGHT, 30'± FROM ROADWAY, OR AS SPECIFIED



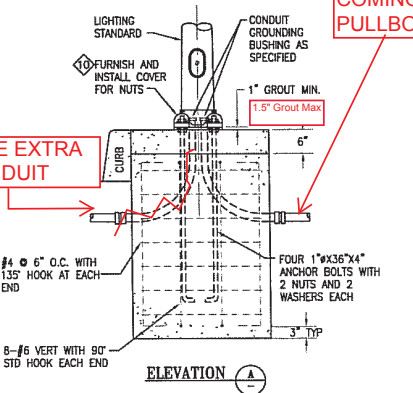
PLAN

REMOVE EXTRA S/L CONDUIT

STEEL SHAFT SHALL BE 8"x4"x28"-6", 11 GAUGE THICK (MIN.), OR AS SPECIFIED



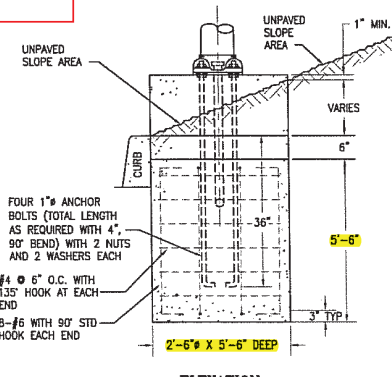
DETAIL 1 SIDE ELEVATION



ELEVATION

REMOVE EXTRA S/L CONDUIT

FOUNDATION FOR STREET LIGHT IN SIDEWALK AREA



ELEVATION

FOUNDATION FOR STREET LIGHT IN UNPAVED AREA

<p>NO. DATE DESCRIPTION BY APP.</p> <p>TABLE OF REVISIONS</p> <p>THIS DRAWING WAS LAST MODIFIED: 09/23/16 15:53, BY: LDaug</p>		<p>REFERENCE INFORMATION & FILE NO. OF SURVEYS</p>		<p>DESIGN & ENGINEERING PUBLIC WORKS CITY & COUNTY OF SAN FRANCISCO 30 VAN NESS AVENUE, 6TH FLOOR SAN FRANCISCO, CA 94102 - 8228</p>	<p>Section Mgr. Philip Thriver</p> <p>Deputy Division Mgr. Isabel Chavez</p> <p>Division Mgr. Patrick Rivera</p>	<p>DESIGNED: DATE:</p> <p>DRAWN: DATE:</p> <p>CHECKED: DATE: 09/16</p>		<p>SCALE: AS SHOWN</p> <p>SHEET OF SHEETS</p>	<p>STREET LIGHT STANDARD FOUNDATION FOR PEDESTRIAN POLES</p>	<p>CONTRACT NO.</p> <p>DRAWING NO. E-0.3</p> <p>FILE NO. 106,285</p> <p>REV. NO.</p>
--	--	--	--	--	--	--	--	---	---	--

Drawing Path: S:\E\A\VP-Templates (Steven Lee)\don't_remove\15-Master CSI Format 2010\Water Drawing Format - 09/23/16.dwg
 Plot Time: Wed, 07 Nov 2016 - 10:28am